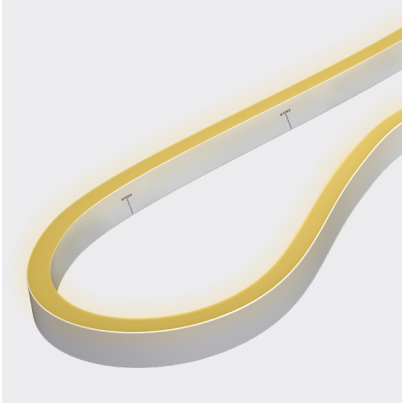


NEON MICRO EDGE

WHITE | SILICONE

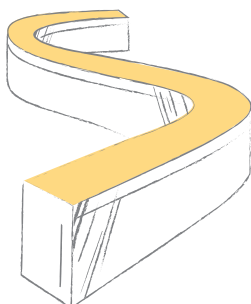
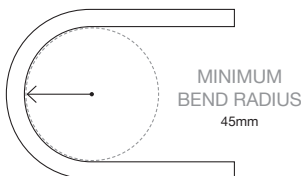
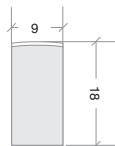
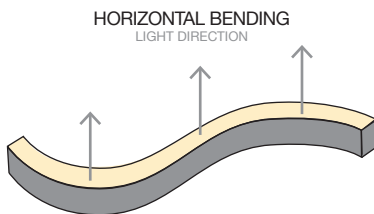


DIBBLE SCULPTURE, DUNEDIN USING 5700K MICRO EDGE

Neon is a broad range of silicone encapsulated LED ribbons with a variety of light emissions and casings that closely reference glass neon tube.

Neon Micro Edge is a sleek W9 × H18mm model perfect for cove lighting, handrails, or architectural features in exterior and interior applications.

Neon is made to order, check with our team for lead times.



APPLICATIONS

- Cove lighting, handrails, or toe-kicks
- Architectural features
- Exterior or interior installations
- Swimming or feature pools

FEATURES

- A smaller W9 × H18mm version of our standard Neon Edge

CODE	COLOUR	LUMENS
BL-LS-4050S-30	WARM WHITE 3000K +/- 220K	≥130lm/m
BL-LS-4050S-40	NATURAL WHITE 4000K +/- 290K	≥130lm/m
BL-LS-4050S-57	COOL WHITE 5700K +/- 385K	≥130lm/m

ELECTRICAL & OPTICAL DATA VARIANCE +/- 10%. SOLD BY THE METRE. IES FILES AVAILABLE. 2200K & 3500K AVAILABLE BY REQUEST.

POWER & TEMP

LED WATTS	4.5W/m
INPUT VOLTS	24V DC Constant voltage
OPERATING TEMP. (ENVIRONMENT)	-40°C ~ +65°C
MAX. RUN PER POWER FEED	30m using one feed 60m using two feeds

LIGHT & LIFE

CRI	≥80
BEAM ANGLE	160°
LED PER METRE	72
SOURCE LIFE	50,000 hours
WARRANTY	5 years

PHYSICAL PARAMETERS & CONTROL

MINIMUM BEND RADIUS	45mm
BEND DIRECTION	Horizontal bending
DIMENSIONS	W9 × H18mm
INGRESS PROTECTION	IP67 or IP68 Protection established by use of connectors. <i>Dimensions of connectors shown on installation guide</i>
CUTTING LENGTH	83.3mm
HOUSING	UV & flame resistant white silicone with opal diffuser
MOUNTING	Profile / clips available <i>SEE PAGE 3.</i>
CONTROL	Dimmable by PWM signal

DON'T SEE THE OPTION FOR YOU? LET US KNOW WHAT YOU ARE LOOKING FOR AND WE'LL SEE WHAT WE CAN DO!

NEON MICRO EDGE | WHITE | CONNECTIONS

Neon products are IP rated based on the fitted connections (power feed / end caps).

Bright Light recommend using Slimline injection moulding for the best result, a clean finish and IP68 rating. These are fitted at factory during the production process and can not be altered once produced - **ensure all lengths are double-checked before ordering.**

If on-site cutting is required (due to lengths being unknown in advance or site design alterations), Snap connector fittings can be used instead. Snap Connectors can be fitted on-site and offer an IP67 rating (provided all installation instructions are followed correctly).

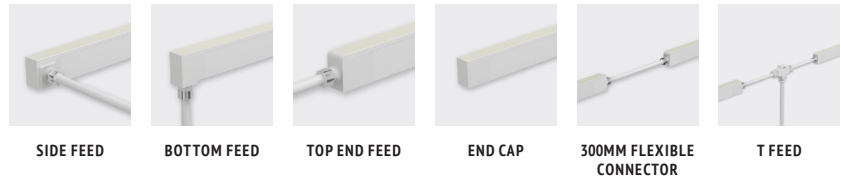
Power feed connectors are priced & supplied with 1metre cable as standard. Please specific at time of quoting if alternate lengths are required.

SLIMLINE INJECTION MOULDING CONNECTIONS | IP68

RECOMMENDED



REQUIRES FITTING AT FACTORY.
EXACT LENGTH REQUIRED BEFORE PRODUCTION



SIDE FEED

BOTTOM FEED

TOP END FEED

END CAP

300MM FLEXIBLE
CONNECTOR

T FEED

SNAP CONNECTIONS | IP67

ON-SITE FITTING



FITTING ON-SITE - WHERE LENGTHS ARE UNKNOWN IN ADVANCE.
MUST BE FITTED CORRECTLY FOR IP RATING



TOP END FEED

END CAP

300MM FLEXIBLE
CONNECTOR

01

02

01

02

WHITE

BL-LS-4058

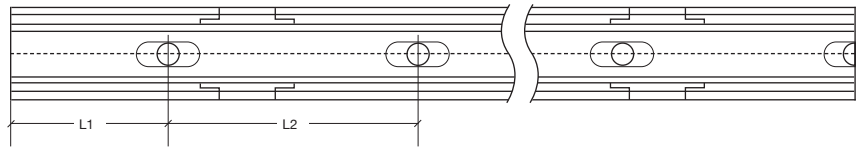
BL-LS-4059

BL-LS-4061

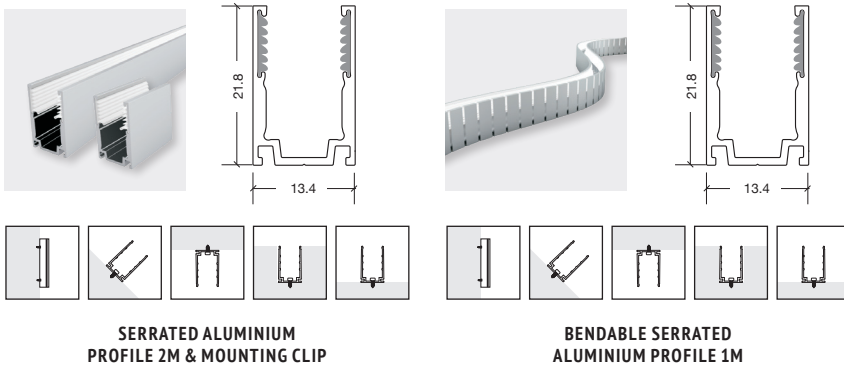
BL-LS-4062

BL-LS-4060

NEON MICRO EDGE | MOUNTING ACCESSORIES



CODE	ACCESSORY	L1	L2	HOLE DIMENSIONS	HOLE NUMBER
BL-LS-4065	SERRATED ALUMINIUM CLIP 20MM	10mm	-	4 × 10mm	1
BL-LS-4063	SERRATED ALUMINIUM PROFILE 1 METRE	100mm	200mm	4 × 10mm	5
BL-LS-4064	SERRATED ALUMINIUM PROFILE 2 METRES	100mm	200mm	4 × 10mm	10
BL-LS-4066	BENDABLE SERRATED ALUMINIUM PROFILE 1 METRE	116.5mm	98.8mm	Ø4.2mm	10



SERRATED ALUMINIUM
PROFILE 2M & MOUNTING CLIP

BENDABLE SERRATED
ALUMINIUM PROFILE 1M